



5 Pine Way, Egham, TW20 0TA

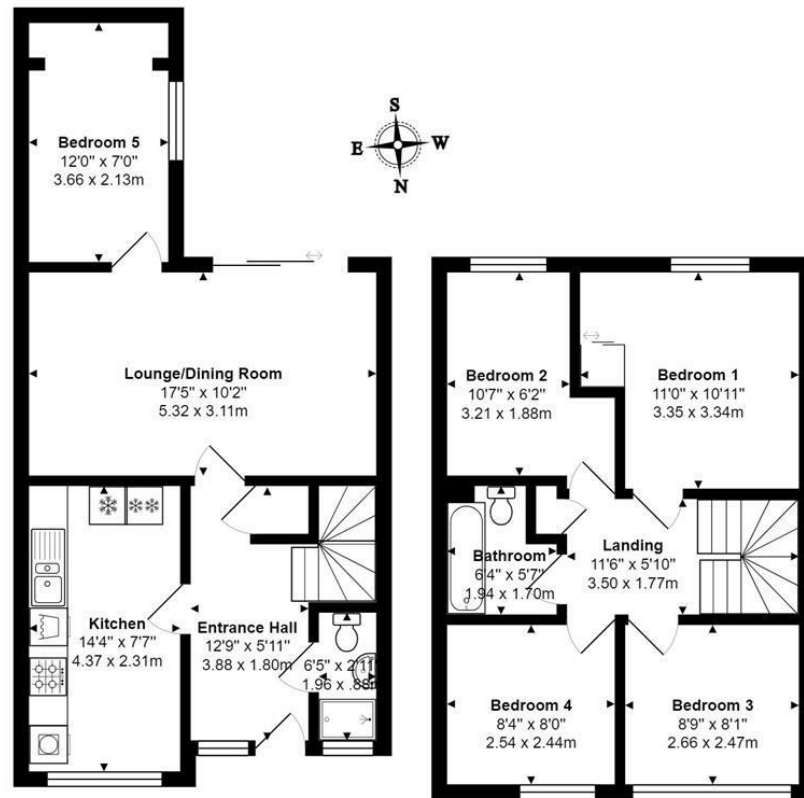
£410,000

5 Pine Way, Egham, TW20 0TA

This 5 bedroom 'investment purchase' is let out until the end of June 2025 at £2,200pcm, giving a gross yield of approximately 6.5%, with no agency fees payable during this period! However it is felt that this figure could easily be increased by 10-15% for the 2025-2026 academic year. Accommodation is well laid out with a 5th bedroom on the ground floor, communal lounge/dining room, good size fitted kitchen with appliances and a ground floor German fitted shower room. Upstairs, off the landing, are four bedrooms and a bathroom. Windows are double glazed and there is a gas central heating system to radiators, with a boiler in the loft, along with a fresh air ventilation system which pumps out cool air into the house to help prevent condensation. The property has a south facing rear garden and is situated about a 15 minute walk to the university. EPC Rating: D.



Floor Plan



Features

- Great Investment Property
- Let out at £2,200pcm
- Large Communal Lounge/Diner
- Gas Central Heating
- Two Bath/Shower Rooms
- Five Good Size Bedrooms
- Until 30th June 2025
- Good Size Fitted Kitchen
- Double Glazing
- 15 Minute Walk To University

